

## ACCESSORIES

# CENTRALIZED UNITS ACCESSORIES

## DUCTS AND PIPES

### FLEXIBLE DUCT



Model	Code	Ø mm	L m
Flexible duct DN 100 mm	OV69132	100	10
Flexible duct DN 125 mm	OV69133	125	10
Flexible duct DN 150 mm	OV69134	150	10
Flexible duct DN 160 mm	OV69135	160	10
Flexible duct DN 180 mm	OV69136	180	10
Flexible duct DN 200 mm	OV69137	200	10

### INSULATED FLEXIBLE DUCT



Model	Code	Ø mm	L m
Insulated flexible duct DN 100 mm	OV69138	100	10
Insulated flexible duct DN 125 mm	OV69139	125	10
Insulated flexible duct DN 150 mm	OV69140	150	10
Insulated flexible duct DN 160 mm	OV69141	160	10
Insulated flexible duct DN 180 mm	OV69142	180	10
Insulated flexible duct DN 200 mm	OV69143	200	10

### INSULATED RIGID DUCT



Model	Code	Ø mm	L m
Insulated rigid duct DN 125 mm	OV69119	125	1000
Insulated rigid duct DN 150 mm	OV69120	150	1000
Insulated rigid duct DN 160 mm	OV69121	160	1000
Insulated rigid duct DN 180 mm	OV69122	180	1000

### GREY ROUND DUCT



Model	Code	Ø mm	L m
Grey round duct DN 63 mm	OV69214	63	50
Grey round duct DN 75 mm	OV69215	75	20
Grey round duct DN 75 mm	OV69216	75	50
Grey round duct DN 90 mm	OV69217	90	20
Grey round duct DN 90 mm	OV69218	90	50

### BLACK ROUND DUCT



Modello	Codice	Ø mm	L m
Black round duct DN 63 mm	OV69219	63	50
Black round duct DN 75 mm	OV69220	75	50
Black round duct DN 90 mm	OV69221	90	50

### FLAT DUCT



Model	Code	Ø mm	L m
Flat duct	OV69240	132x52 mm	20

### FLEXIBLE DUCT CLAMP



Model	Code	Ø mm
Flexible duct clamp DN 60/325 mm	OV69162	60

### O-RING



Model	Code	Ø mm
O-Ring DN 63 mm	OV69229	63
O-Ring DN 75 mm	OV69230	75
O-Ring DN 90 mm	OV69231	90

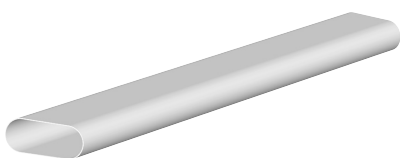
## SEALING STRIP



Model	Code	Ø mm	L m
Sealing strip	OV69222	75	15
Sealing strip	OV69223	90	15
Sealing strip	OV69241	132x52	15

## ADAPTORS AND COUPLINGS

### FLAT DUCT



Model	Code	L m
Flat duct 163 x 68mm	OV69113	1,15
Flat duct 132 x 52 mm	OV69239	3

### DOUBLE O-RING CONNECTOR



Model	Code
Double O-Ring connector 132 x 52 mm	OV69245
Double O-Ring connector 163 x 68 mm	OV69114

### DOUBLE STRAIGHT ADAPTOR



Model	Code
Double straight adaptor 1x DN 160mm => 2x 163 x 68mm	00V69115

### SINGLE STRAIGHT ADAPTOR



Model	Code
Adaptor 1 x DN 90 mm => 132 x 52 mm	OV69255
Adaptor 1 x DN 125 mm => 163 x 68 mm	OV69116

### BEND 90° VERTICAL



Model	Code
Bend 90° vertical 153 x 52 mm	OV69242
Bend 90° vertical 163 x 68 mm	OV69117

### BEND 90° HORIZONTAL



Model	Code
Bend 90° horizontal 132 x 52 mm	OV69243
Bend 90° horizontal 163 x 68 mm	OV69118

### COUPLING



Model	Code
Coupling => flat duct	OV69167

### ROTARY ADAPTOR 180°



Model	Code
Rotary adaptor 180° 132 x 52 mm	OV69244

## STRAIGHT ADAPTOR ROUND DUCT > FLAT DUCT



Model	Code	Ø mm
Straight adaptor 132 x 52 mm	OV69253	75
Straight adaptor 132 x 52 mm	OV69254	90

## STRAIGHT DOUBLE ADAPTOR



Model	Code	Ø mm
Straight double adaptor DN 90 mm 2 x 63 mm	OV69235	90

## PIPE ELBOW 90°



Model	Code	Ø mm
Pipe elbow 90°	OV69227	75
Pipe elbow 90°	OV69228	90

## END CAP



Model	Code	Ø mm
End cap	OV69232	63
End cap	OV69233	75
End cap	OV69234	90
End cap	OV69246	132 x 52

## ADAPTOR, ELBOW 90° ROUND DUCT > FLAT DUCT



Model	Code	Ø mm
Adaptor elbow 90° 132 x 52 mm	OV69256	75
Adaptor elbow 90° 132 x 52 mm	OV69257	90

## COUPLING



Model	Code	Ø mm
Coupling => Round duct	OV69177	63
Coupling => Round duct	OV69178	75
Coupling => Round duct	OV69179	90

## MOUNTING BRACKET



Model	Code
Mounting bracket 132 x 52 mm	OV69247

## PIPE ELBOW 90° + PIPE COUPLING



Model	Code	Ø mm
Pipe elbow 90° + pipe coupling	OV69124	125
Pipe elbow 90° + pipe coupling	OV69125	150
Pipe elbow 90° + pipe coupling	OV69126	160
Pipe elbow 90° + pipe coupling	OV69127	180

## PIPE COUPLING



Model	Code	Ø mm
Pipe coupling	0V69128	125
Pipe coupling	0V69129	150
Pipe coupling	0V69130	160
Pipe coupling	0V69131	180

## PIPE REDUCER



Model	Code	Ø mm
Pipe reducer => 160 mm	0V69123	160

## PIPE COUPLING

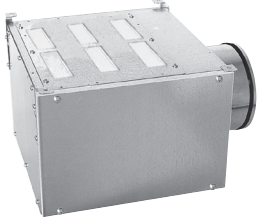


Model	Code	Ø mm
Pipe coupling	0V69224	63
Pipe coupling	0V69225	75
Pipe coupling	0V69226	90

# PLENUM BOXES

## PLENUM

Plenum box for air intake and extraction, thermally and acoustically insulated from the inside, supplied with 4 brackets for mounting. To be used straight and perpendicular bend 90°. To be combined with flat ducts 132x52 mm and static reducer.



Model	Code	Ø mm	L/L1 mm	W mm	H mm
Box 1xDN 160mm => 6x132x52mm	OV69164	160	355/310	325	225
Box 1xDN 160mm => 9x132x52mm	OV69165	160	355/310	475	225

## PLENUM

Plenum box for air intake and extraction, thermally and acoustically insulated from the inside, supplied with 4 brackets for mounting. To be used straight and perpendicular bend 90°. To be combined with round ducts DN 63/75/90.



Model	Code	Ø mm	L/L1 mm	W mm	H mm
Box 1xDN 160mm 5xDN 63/75/90mm	OV69170	160	355/310	325	225
Box 1xDN 160mm 6xDN 63/75/90mm	OV69171	160	355/310	370	225
Box 1xDN 160mm 8xDN 63/75/90mm	OV69172	160	355/310	475	225
Box 1xDN 160mm 10xDN 63/75/90mm	OV69173	160	355/310	580	225

## PLENUM

Plenum box for air intake and extraction, thermally and acoustically insulated from the inside, supplied with 4 brackets for mounting. To be used straight and perpendicular bend 90°. To be combined with round ducts DN 63/75/90.



Model	Code	Ø mm	L/L1 mm	W mm	H mm
Box 1xDN 160mm 5+5x DN 63/75/90mm	OV69174	160	365/325	300	225
Box 1xDN 160mm 10+10x DN 63/75/90mm	OV69175	160	365/325	600	225
Box 1xDN 180mm 15+15x DN 63/75/90mm	OV69176	160	365/325	535	330

## PLENUM

Plenum box for round ducts. To be combined with round ducts DN 63/75/90.



Model	Code
Box 1xDN 160 mm => 4 x DN 63 mm	OV69344
Box 1xDN 160 mm => 6 x DN 63 mm	OV69345
Box 1xDN 160 mm => 8 x DN 63 mm	OV69346
Box 1xDN 160 mm => 10 x DN 63 mm	OV69347
Box 1xDN 160 mm => 4 x DN 75 mm	OV69348
Box 1xDN 160 mm => 6 x DN 75 mm	OV69349
Box 1xDN 160 mm => 8 x DN 75 mm	OV69350
Box 1xDN 160 mm => 10 x DN 75 mm	OV69351
Box 1xDN 160 mm => 4 x DN 90 mm	OV69352
Box 1xDN 160 mm => 6 x DN 90 mm	OV69353
Box 1xDN 160 mm => 8 x DN 90 mm	OV69354
Box 1xDN 160 mm => 10 x DN 90 mm	OV69355

## PLENUM

Plenum box



Model	Code
Box 1xDN 160/2x DN 90mm => 11 x 132 x 52 mm	OV69166

## PLENUM

Plenum box for air intake and extraction, supplied with 4 fins with slot for mounting. To be combined with flat ducts.



Model	Code	L mm	W mm	H mm
Box 2 x 163 x 68 mm => 5 x 132 x 52 mm	OV69168	234	536	74

## OUTLETS - FLOW REGULATORS

### TRIPLE OUTLET 90° > CIRCLE DUCT



Model	Code	Ø <sub>1</sub> mm	Ø <sub>2</sub> mm
Triple outlet 90°, circle duct	OV69236	125	63

### DOUBLE OUTLET 90° > CIRCLE DUCT



Model	Code	Ø <sub>1</sub> mm	Ø <sub>2</sub> mm
Double outlet 90°, circle duct	OV69237	125	75
Double outlet 90°, circle duct	OV69238	125	90

### OUTLET 90° FLAT DUCT > ROUND VALVE



Model	Code	Ø <sub>1</sub> mm	Ø <sub>2</sub> mm
Single outlet 90°	OV69248	125	132 x 52

### DOUBLE OUTLET 90° FLAT DUCT > ROUND VALVE



Model	Code	Ø <sub>1</sub> mm	Ø <sub>2</sub> mm
Double outlet 90°	OV69249	125	132 x 52

### STRAIGHT OUTLET FLAT DUCT > ROUND VALVE



Model	Code	Ø <sub>1</sub> mm	mm
Straight outlet	OV69250	125	132 x 52

### OUTLET 90° FLAT DUCT > RECTANGULAR VALVE



Model	Code	mm <sub>1</sub>	mm <sub>2</sub>
Outlet 90°, flat duct	OV69250	132 x 52	300 x 80

### AXIAL OUTLET WITH ADJUSTABLE DEFLECTORS



Model	Code
Axial outlet, white finishing 600x600	OV69373

### PLENUM FOR AXIAL OUTLET



Model	Code	Ø mm
Plenum for axial outlet 600x600	OV69375	160

## SHUTTER FOR AXIAL OUTLET



Model	Code	Ø mm
Shutter for axial outlet	0V69376	160

## AIRFLOW RESTRICTOR FOR FLAT DUCT



Model	Code
Airflow restrictor for flat duct	0V69169

## AIRFLOW COMPENSATION BOOSTER



Model	Code
Airflow compensation booster	0V69180

## AIRFLOW REGULATOR



Modello	Codice	m³/h
Airflow regulator	0V69181	15

## AIRFLOW REGULATOR



Model	Code	Min m³/h	Max m³/h
Airflow regulator	0V69182	20	50

## AIRFLOW REGULATOR



Model	Code	Min m³/h	Max m³/h
Airflow regulator	0V69183	15	50



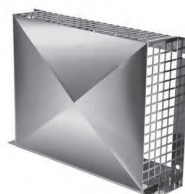
## GRILLES-VALVES

### EXTERNAL WALL GRILLE WITH AIRFLOW DEVIATION



Model	Code	Ø mm
External wall grille with airflow deviation	OV69184	125
External wall grille with airflow deviation	OV69185	160
External wall grille with airflow deviation	OV69186	200

### EXTERNAL WALL GRILLE



Model	Code	Ø mm
External wall grille	OV69187	160
External wall grille	OV69188	180

### WHITE STEEL ADJUSTABLE ROUND AIR SUPPLY VALVE + 1 BRACKET



Model	Code	Ø mm
White steel adjustable round air supply valve	OV69258	125
White steel adjustable round air supply valve	OV69259	125

### ABS ROUND AIR SUPPLY VALVE



Model	Code	Ø mm
ABS round air supply valve	OV6926	125

### SQUARE EXHAUST VALVE



Model	Code	Ø mm
Square exhaust valve	OV69263	125

### STEEL WHITE GRILLE FOR RECTANGULAR VALVES



Model	Code	Ø mm
Steel white grille for rectangular valves	OV69269	350 x120
Steel white grille for rectangular valves	OV69273	435 x106

## SILENCERS

### RIGID ACOUSTIC SILENCER WITH GASKETS



Model	Code	Ø mm	L mm
Rigid acoustic silencer	OV69107	125	600
Rigid acoustic silencer	OV69110	125	900
Rigid acoustic silencer	OV69108	160	600
Rigid acoustic silencer	OV69109	160	900
Rigid acoustic silencer	OV69293	200	600
Rigid acoustic silencer	OV69294	200	900
Rigid acoustic silencer	OV69295	250	600
Rigid acoustic silencer	OV69296	250	900

# ROOF TERMINALS

## STEEL TILE FOR FLAT ROOFS



Model	Code	Ø mm
Steel tile for flat roofs	OV69189	160/180

## LEAD TILE



Model	Code	Ø mm
Lead tile 20° => 30°	OV69190	160/180
Lead tile 30° => 40°	OV69191	160/180
Lead tile 40° => 50°	OV69192	160/180

## INSULATED BLACK ROOF TERMINAL



Model	Code	Ø mm
Insulated black roof terminal	OV69193	160/180

# HEATING BATTERIES

## ELECTRICAL HEATING BATTERIES



Model	Code	Ø mm	P kW
Electrical heating batteries	OV69104	160	0.5
Electrical heating batteries 180mm 1Kw	OV69105	180	1
Electrical heating batteries 180mm 2Kw	OV69106	180	2
Electrical heating batteries 200mm 2Kw	OV69297	200	2
Electrical heating batteries 250mm 4Kw	OV69298	250	4

# REMOTE CONTROLLERS

## RG IL-V

RG IL-V: dedicated wireless controller supplied with the unit (IL, IL PPE and V series), with four modes of operation: "Away" (low speed), "Home" (medium speed), Party (speed at 100%) and "Timer" (high speed for 30, 60 or 90 minutes). The practical operating light (LED) is a fast and useful indication for the maintenance of the filters when becoming necessary.

RG IL-V HR e CO<sub>2</sub>: Two optional control panels, having all the above features with a LED status for each mode, allow to keep some important values under control, such as the humidity level (RG IL-V HR) or the CO<sub>2</sub> level (RG IL-V CO<sub>2</sub>) and they eventually force the air extraction in case the level is arising above the pre-set threshold. The panel is equipped with a practical soft touch which allows to change modes or to set various levels of Humidity or CO<sub>2</sub>.



RG IL-V

RG IL-V HR e CO<sub>2</sub>

Model	Code	Suitable for series
RG IL-V	OV69377	TEMPERO ECO IL E BP-ECO V E BP
RG IL-V HR	OV69378	TEMPERO ECO IL E BP-ECO V E BP
RG IL-V CO <sub>2</sub>	OV69379	TEMPERO ECO IL E BP-ECO V E BP

## RG HV

RG HV: dedicated controller (HV series) which allow to manually select the speed, through 3 different intensity levels. (1 controller per each motor is recommended, and thus in total 2 controllers per unit).



RG HV

Model	Code	Suitable for series
RG HV	OV69384	TEMPERO ECO HV E BP

## RG IL SLIM

RG IL SLIM: dedicated remote controller supplied with the unit (TEMPERO ECO IL 250 E BP SLIM), with three different speeds to be manually selected: 50, 75 and 100%. Possibility to change the speed calibration by running through the trimmers on the board.

The practical operating light (LED) is a fast and useful indication for Active speed, BY PASS and filter maintenance (filter clogging alarm function with operating hours counting).

Plug'n'play connection for power and remote controls

Automatic check of BY PASS with free-cooling function (set point set at 24°C). Integrated antifreeze protection with reduction of inlet fan speed or, if present, with antifreeze heater (configuration activated by the manufacturer).

Temperatures probes alarm and possibility to control speed through additional external device.



RG IL SLIM

Model	Code	Suitable for series
RG IL SLIM	OV69385	TEMPERO ECO IL 250 E BP SLIM