

Model	A	B	C	D	ØE	F
TEMPERO 100	257	400	155	179	95	23
TEMPERO 100 T	257	400	155	179	95	23
TEMPERO 100 PH	257	400	155	179	95	23



CE IPX4 T 45

TEMPERO 100

AERATOR WITH HEAT RECOVERY

- Aerator with Energy Recovery up to 70%;
- Ideal for domestic applications and suitable for single room installation;
- Wall and/or panel mounting;
- Ball bearing motor;
- Heat exchanger in PVC welded plates;
- Twin centrifugal fan;
- Polyurethane filters to grant higher protection and long life;
- Pre-heating system (PH model) consists of a 240 W heating element with thermostat fitted in the inlet duct made of self extinguishing material;
- Base, Timer and Pre-heated versions;
- The optional RG 5 controller allows ON/OFF operation and speed control on the base version. The optional RG E PH controller allows ON/OFF functions, working speed and electrical heating element regulation in the PH version.
- Case and internal components in ABS white material;
- High performance in terms of energy recovery, consumption, flow rate and sound level;
- In compliance with Standard EN 60335-2-80.

FURTHER INFORMATION

Tempero 100 is an extractor fan with energy recovery which grants a better and healthier environmental comfort, while moderating the temperature of incoming air in single premises. Furthermore, its action also enables Thermal Energy saving thus avoiding heat waste and thermal loss, and granting economic advantages. Our environments are more and more "sealed", heated in winter and conditioned in summer.

Hence the need of a correct ventilation avoiding the expensive heat waste due to the common practice of opening the windows. Let's analyse how the "Temperature moderation" takes place: the extracted air crosses the heat exchanger thus transferring thermal energy to the incoming fresh air.

During this process, the incoming, temperate air and the outgoing foul air are completely separated.

Suitable for wall installation on new or existing Ø100/120mm ducts. The cross flow heat exchanger is made of PVC alveolar overlapped and welded plates and is equipped with two anti-dust filters, easily removable for cleaning operation. It has been equipped with a dedicated condensation drainage hole thus eliminating the build-up of excess condensation.

Tempero PH has been designed to run in extreme temperature conditions and, in particular, with external temperature up to -25°C. This is possible thanks to a 240 W pre-heating element fitted in the inlet duct and controlled by a thermostat which enables the functioning with an external temperature up to -5°.

When the outside temperature reaches -5°C, the thermostat activates the 240W coil, thus heating the incoming air to about 15-20°, avoiding the freezing of the recovery unit.

Tempero 100:

Ideal for continental climates with working temperature between -5°C and +35°C.

Tempero 100 T:

Same main features of the base version with additional Timer function.

Tempero 100 PH:

Ideal for cold climates with external temperature up to -25°C.

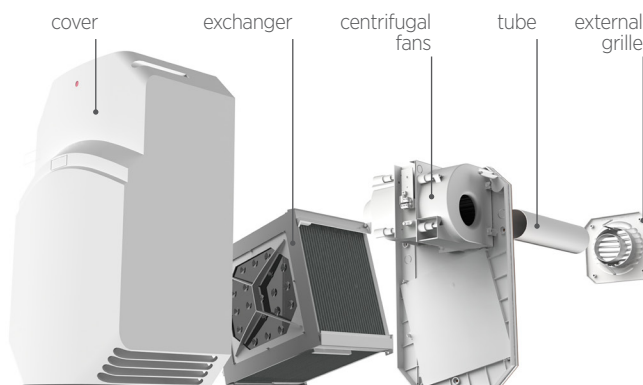
TECHNICAL DATA

Model	Code	Ø Hole (mm)	Voltage (Volt)	Frequency (Hz)	Flow rate "IN" (m³/h)	Flow rate "OUT" (m³/h)	Max press. (mm H ₂ O)	Max press. (Pa)	Power (W)	Noisiness dB(A) _{1m}	Weight (Kg)
TEMPERO 100	0068400	100-120	220-240	50	60	70	10,2	100	40	34	3,3
TEMPERO 100 T	0068500	100-120	220-240	50	60	70	10,2	100	40	34	3,3
TEMPERO 100 PH	0068600	100-120	220-240	50	60	70	10,2	100	280	34	3,3

IN EVIDENCE

WARM AIR IN WINTER AND COOLER IN SUMMER WITH EFFICIENCY UP TO 70%

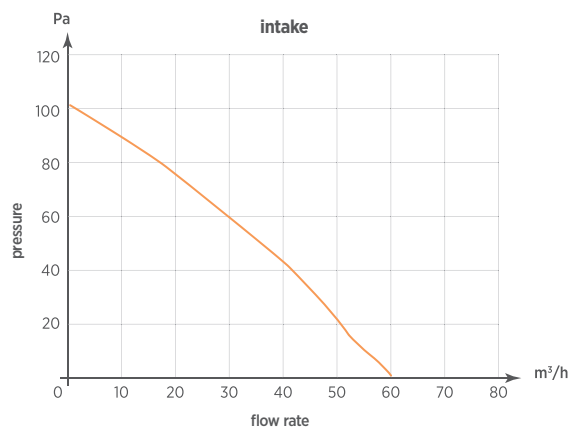
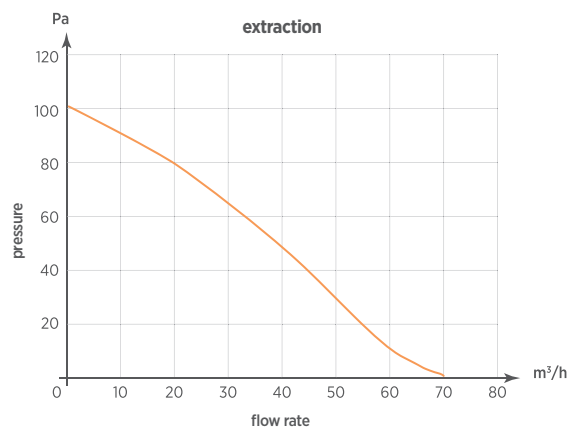
TEMPERO is a twin centrifugal fan: one extracts air directly outside, the other one takes the external air and blows it into the room. During this process the incoming and outgoing airflows (completely separated) cross the heat exchanger made of PVC alveolar overlapped and welded plates: the extracted airflow transfers thermal energy to the incoming fresh air by reducing energy requirements necessary for heating (or air conditioning) the room.



TEMPERO 100 can be easily installed on new or existing Ø 100/120 mm duct. It can also replace an existing axial fan. It is supplied with a PVC duct (Ø 63 mm, 400 mm length) to be fitted inside the existing ducting; in case of walls with more than 400 mm thickness, a similar duct having same diameter and more length can be used.

Ducts of considerable length cause a decrease of performance.

FLOW CHARTS INCOMING AND OUTGOING AIR



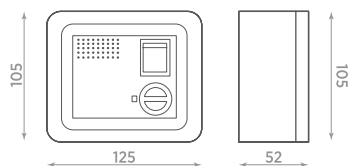
TEMPERO 100 WITH RG5 PERFORMANCES

Speed	I°	II°	III°	IV°	V°
Volt	110	130	160	195	230
RPM	600	880	1390	2230	2490
m³/h extraction	17	24,7	39,1	62,7	70
m³/h intake	14,5	19,3	33,5	53,8	60
dB(A) _{3m}	N.R.	N.R.	22	31,6	34
P (W)	10,2	14,3	21,7	30,5	41,1

ACCESSORIES:

RG5 CONTROLLER

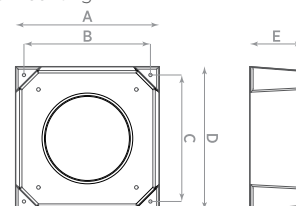
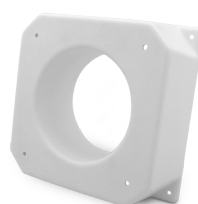
RG 5: suitable for TEMPERO 100 to control ON/OFF and 5 speed regulation
RG E PH: suitable for TEMPERO 100 PH to control ON/OFF, stepless speed and heating element regulation



Model	Code	Suitable for series
RG 5	0031400	TEMPERO 100
RG E PH	0031800	TEMPERO 100 PH
Recessed wall kit controller	0090500	RG 5 - RG E PH
Filter	0068480	TEMPERO 100, 100 T e 100 PH

SPACER FOR EXTERNAL GRILLE

Accessory suitable for wall mounting also in case of very reduced thickness such as prefabricated structures, as homes and offices, containers, shelters, etc. The accessory does not allow the glass mounting



Model	Code	A	B	C	D	E
Spacer	0068611	176	155	155	176	65